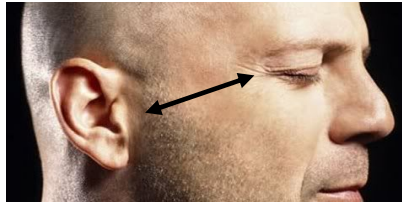
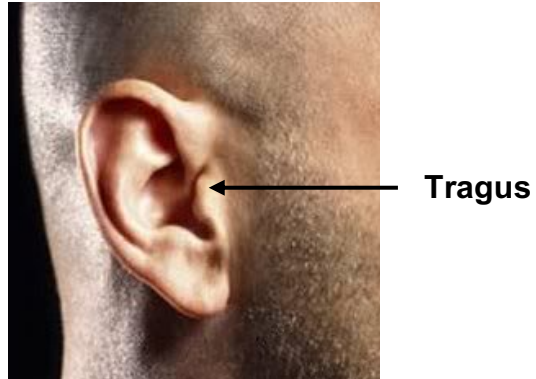


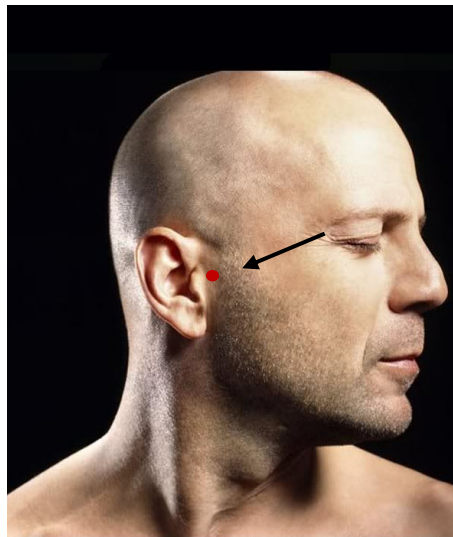
## MEG FIDUCIAL PLACEMENT

**RIGHT & LEFT EAR LOCATIONS** – Measure on a straight line 1.5 cm midline from the tip of the tragus (the small cartilaginous flap in front of the external opening of the ear) to the Outer Canthus (the outer corner edge of the eye).

- a. From the tip / outer edge of the tragus midline measure 1.5 cm on a straight line to the outer corner of the eye.



- b. Place a small dot using a non-permanent marker.



# MEG FIDUCIAL PLACEMENT

Page -2-

- 2) **FOREHEAD LOCATION** - Place a ***DOT*** at the middle of the forehead between the eyebrows.
- Measure the distance from the Nasion up (towards the eyebrows) to 1.5 cm then;
  - Measure the distance between the eyebrows and mark at  $\frac{1}{2}$  the distance.
  - Place a small dot using a non-permanent marker.

